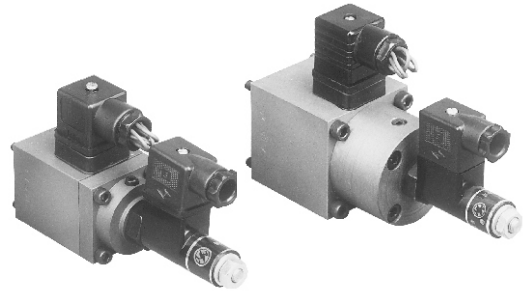


## Purpose

This product is used in the electric-hydraulic proportional closed loop control system, together with proportional control amplifier. Gauge pin of differential inductance displacement sensor connects directly with armature to realize the direct

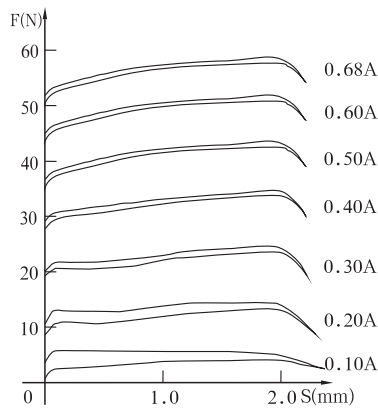


inspection to valve spool, and then gets the accurate position of valve spool. This series of production have mass to use in proportional flux valve and proportional directional valve of REXROTH.

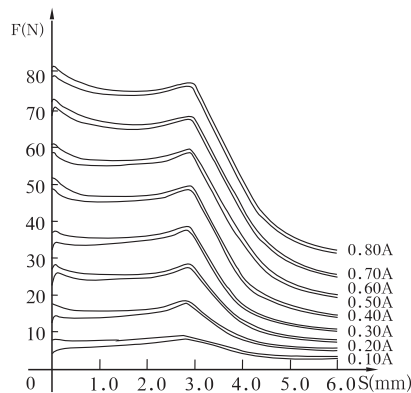
## Key Parameters

Code	GP45A4-AIW9	GP45B4-AIW9	GP61-4-AIW9	IW9-03
Rated Current (A)	0.8/1.5	0.8/1.5	1.51	
Room Temperature Resistance 20°C (Ω)	19.5/5.4	19.5/5.4	10	31+45+31
Rated Force (N)	80	75	150	
Rated Stroke (mm)	3	4	4.5	
Total Stroke (mm)	6	6	9	±4.5
Force Lag Characteristic (%)	≤4	≤4	≤4	
Current Lag Characteristic (%)	≤4	≤4	≤4	
Repeat Accuracy (%)	≤1	≤1	≤1	≤1
Static Oil Pressure (MPa)	21	21	21	21
Degree Of Enclosure	IP65	IP65	IP65	IP65

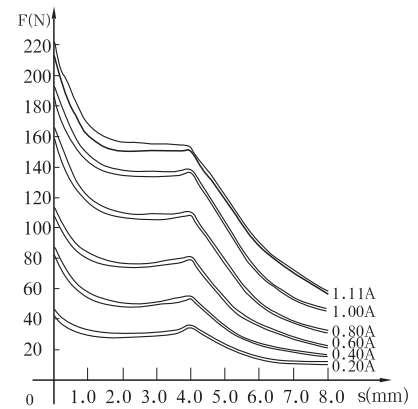
## Steady Stroke-Force Curve



GH263-035



GH263-045

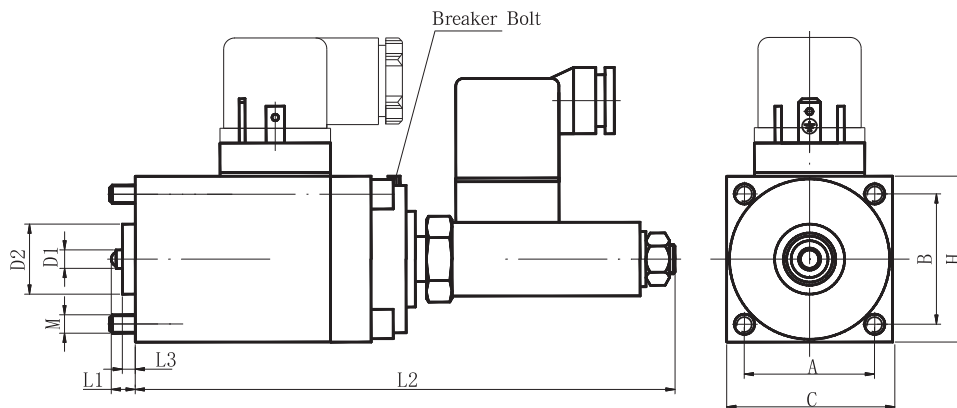


GH263-060



## GP SERIES PROPORTIONAL VALVE SOLENOID WITH DISPLACEMENT TRANSDUCER

### Externality & Installation Dimensions



Nominal Size Product Code	Nominal Size									
	A	B	C	D1	D2	H	L1	L2	L3	M
GP61-4-AIW9	48	48	60	φ 6	φ 32	60	6	168	3.0	M6X70-12.9
GP45A4-AIW9	35.3	35.3	45	φ 5	φ 19	45	6.5	148	3.5	M5X70-12.9
GP45B4-AIW9	35.3	35.3	45	φ 5	φ 19	45	6.5	148	3.5	M5X70-12.9

### Operating Notice

- The sensor and the stroke of the solenoid are OK when it finished, please don't adjust by yourself until you have any special requirements.
- The socket of solenoids meet with ISO4400 standard.
- There is a protector of over-current between electrical control system and solenoid, in order to prevent the solenoid and the electrical component from burning in improper conditions.
- The working medium of hydraulic system is mineral oil, phosphoric acid oil.
- Make the vent hole above when installing, make sure the air exhausted from solenoid when you use it.
- The solenoid fit for continuous duty.
- Please note the current specification.

### Explanation Of Sample

- If the application is beyond the catalogue, please contact with us.
- Characteristic curve for reference only.
- The main performance parameter is obtained in the conditions of lab. Finally explanation and changing of the parameters by KATDT.